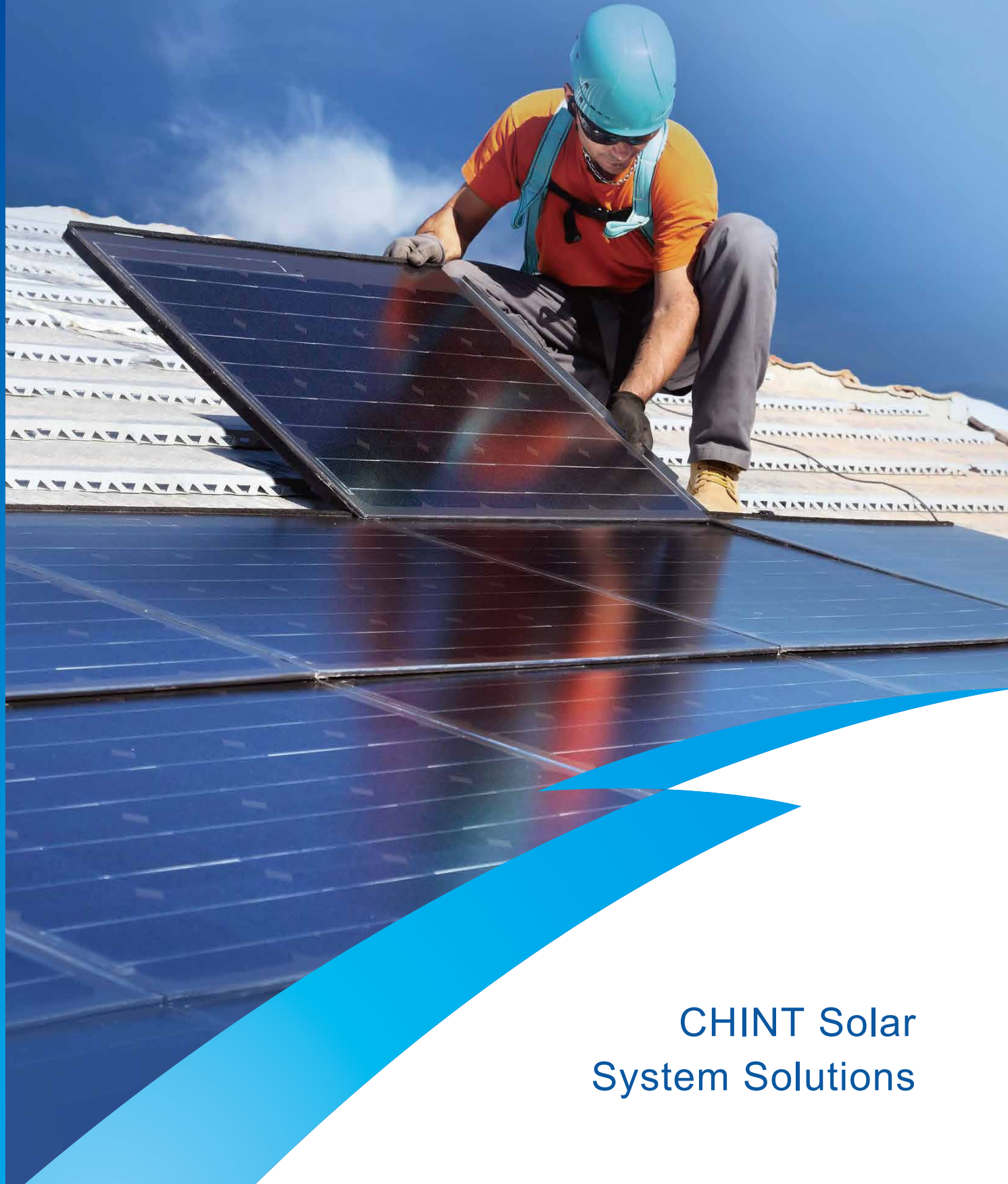


CHINT
CHINT ELECTRIC




CHINT Solar
System Solutions

CHINT

CHINT Solar System Solutions

Contents:

I- About CHINT	01-02
1. Introduction	01-02
2. CHINT Photostatic(PV) around the world	03-04
II- Business scope and competitive advantage	05-06
1. PV equipment supply	05-06
2. PV system design	05-06
3. Professional on-site construction guidance and after-sales service	05-06
III- PV System solution	07-19
1. System application environment	07-08
2. Working Principle	07-08
3. Main equipment	09-12
4. System Solution	13-18
5. Project reference	19-19



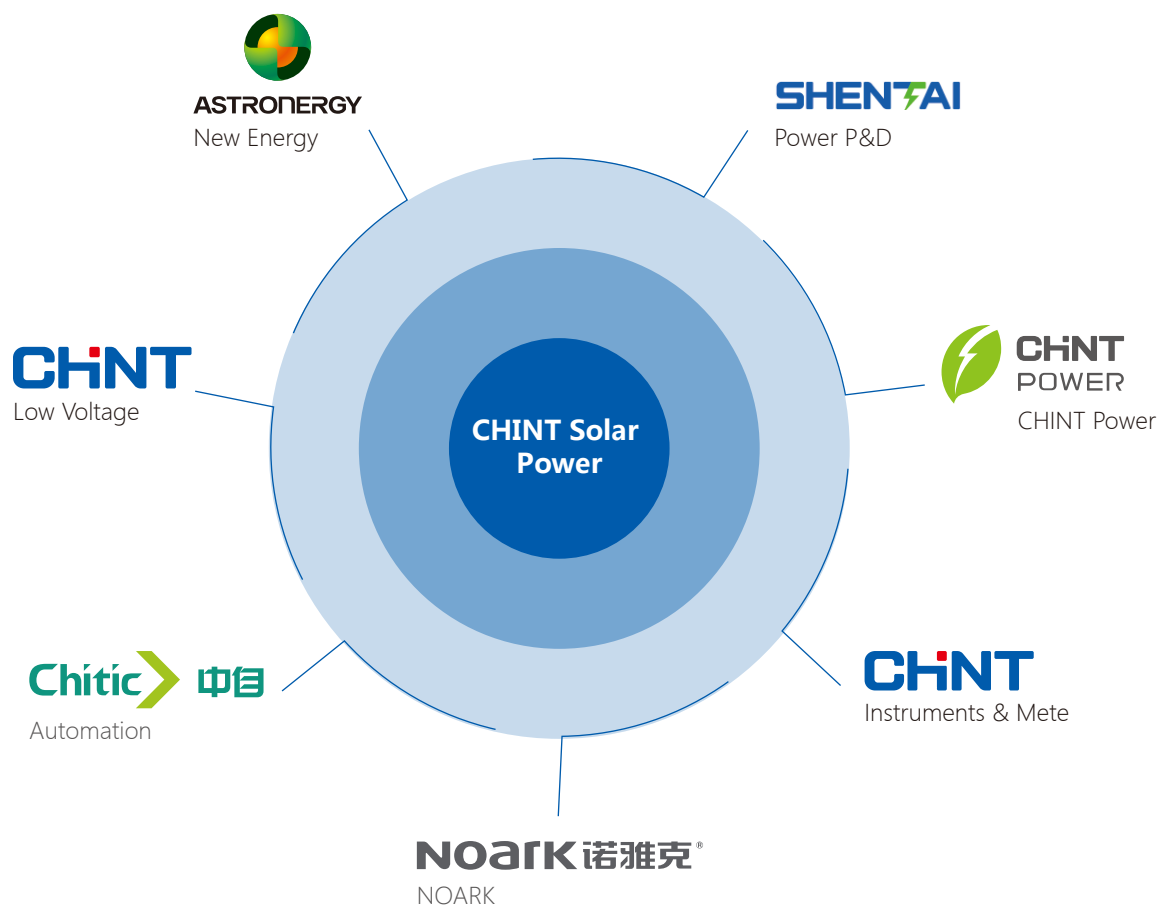


CHINT Group Presentation

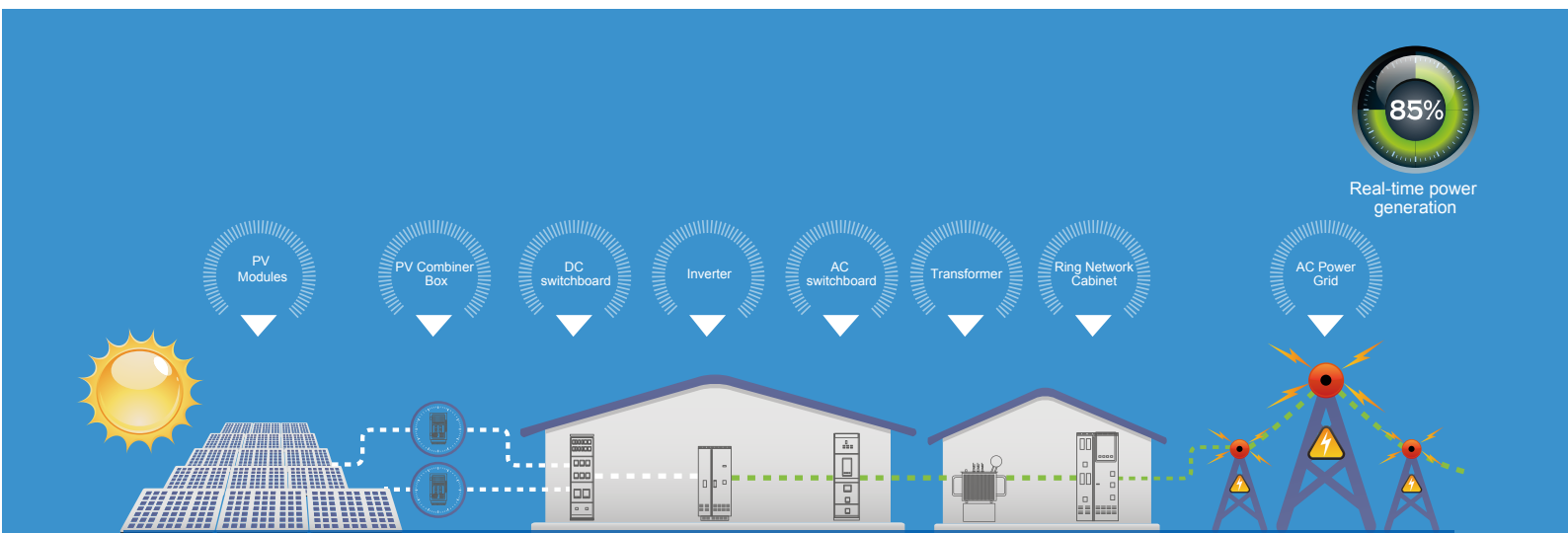
CHINT is committed to providing the world with safe, reliable and stable lectrical equipment and clean energy solutions.

After more than 30 years of growth, CHINT has developed from Asia's largest LV apparatus supplier to leading global electrical equipment and integrated supplier, with strength from power generation, storage, transmission, transformation,distribution to terminal consumption.To

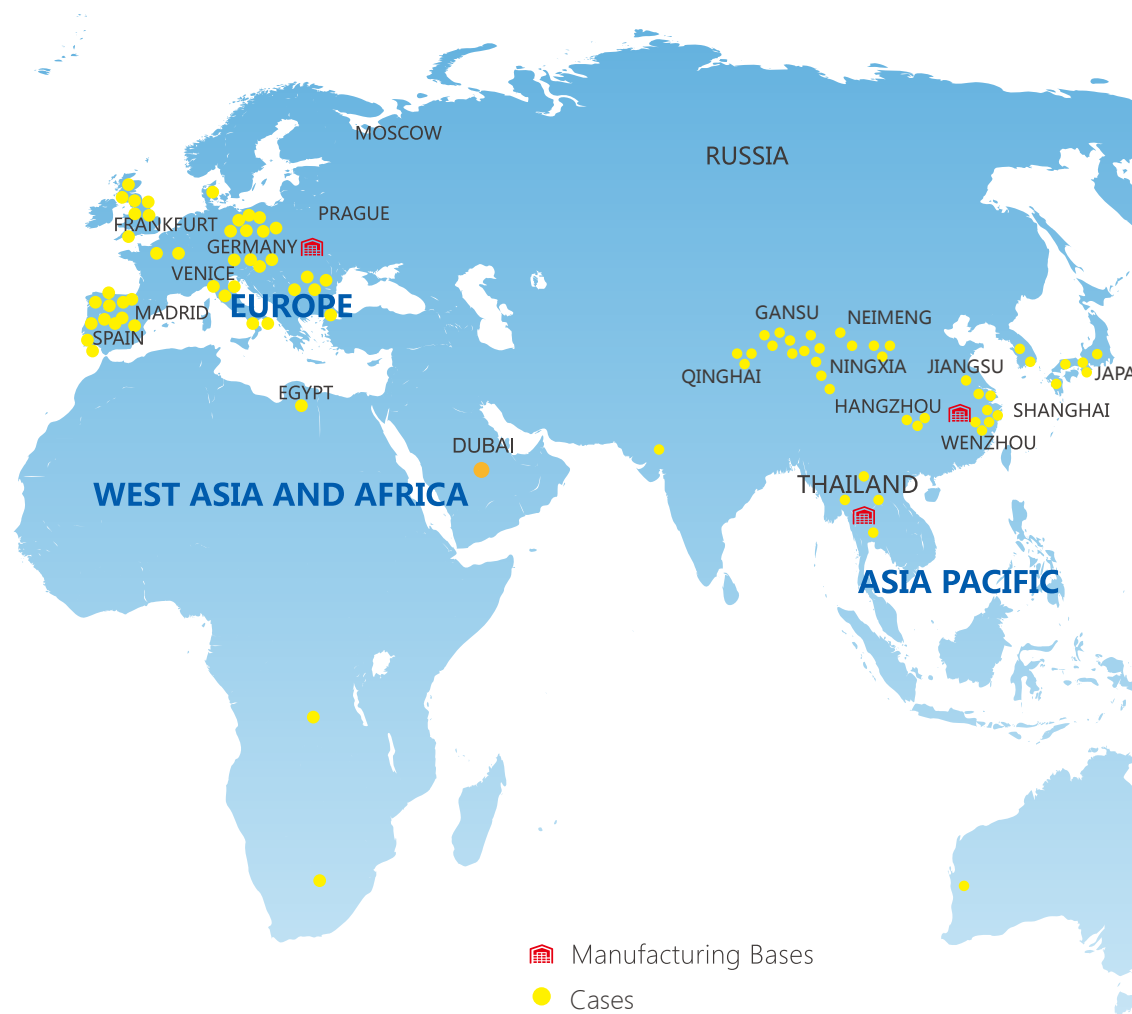
date, with the annual sales revenue exceeding more than 725 million USD and over 30,000 employees around the world, CHINT has provided reliable electrical equipment and solutions for more than 130 countries and regions worldwide as an active player of electric power construction in the global market.



Total Solution provider



CHINT Projects Worldwide



Turn Key Solution

EPC Service Turnkey Solution



Design



Measurement



Manufacturing

EPC Business Scope

- Solar & Wind Power Plants and other Conventional Energy Power Plants
- Substations and Transmission Lines up to 500kV
- Oil, Gas & Chemical Industry Power System Sol



Construction



Installation



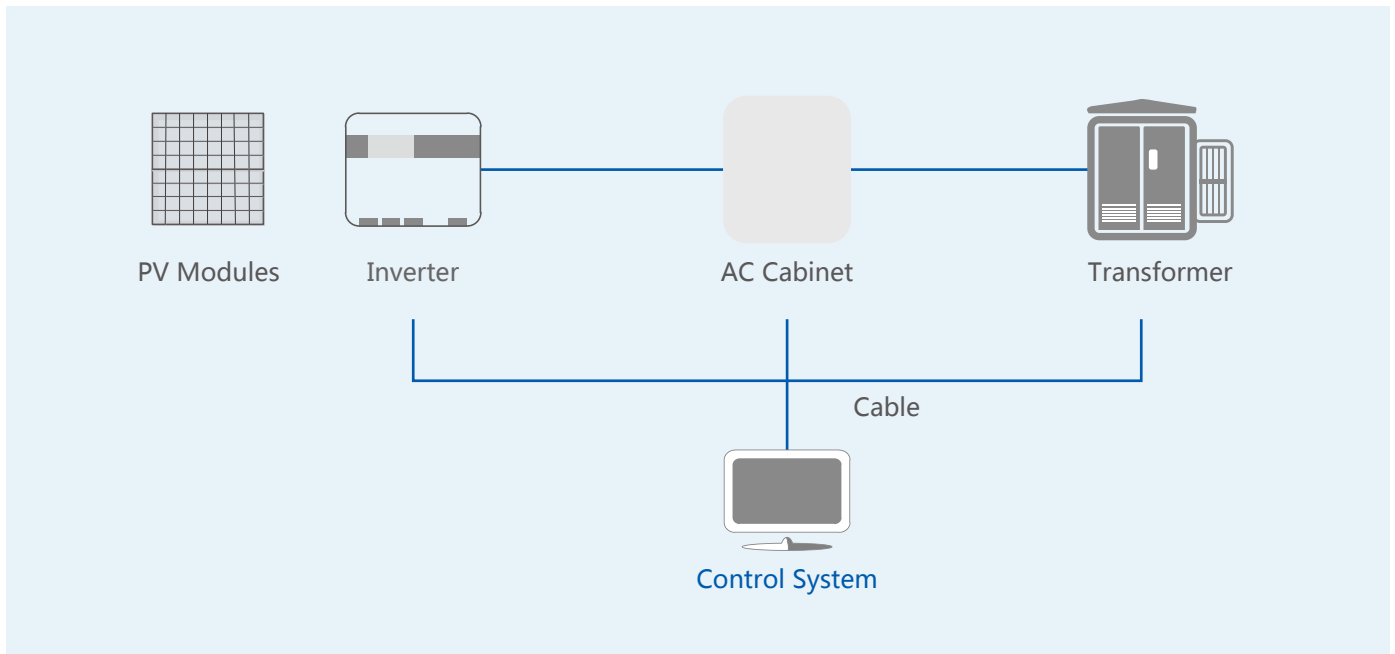
Completion&Operation

ution • Mining & Metallurgy Industry Power System Solution • Civil Infrastructure Industry Power System Solution

Business scope and competitive advantages

PV equipment supply

As the world's leading electrical industrial chain and solutions provider, CHINT is committed to providing the world leading clean energy solutions. Provided equipment includes PV module, Inverter, combiner box, power distribution cabinet, transformer, cables and control system, etc. These equipment have been widely used in various types of PV systems. Besides, CHINT electrical equipment received complete approval from customers based on their reliable and stable performance.



System integration, scheme design

Modular design, reasonable combination of the elements of each product based on excellent PV system integration capabilities and abundant oversea PV sales experience won the trust of the customers. The PV system has high power generation efficiency, safe and reliable performance, and can meet the requirements of various applications environmental conditions.



Professional on-site construction guidance and after-sales service

The company has a strong and experienced team in product development, system design and engineering construction. It can provide comprehensive PV system solutions, professional on-site construction technical guidance and stable after sales service.



System solution

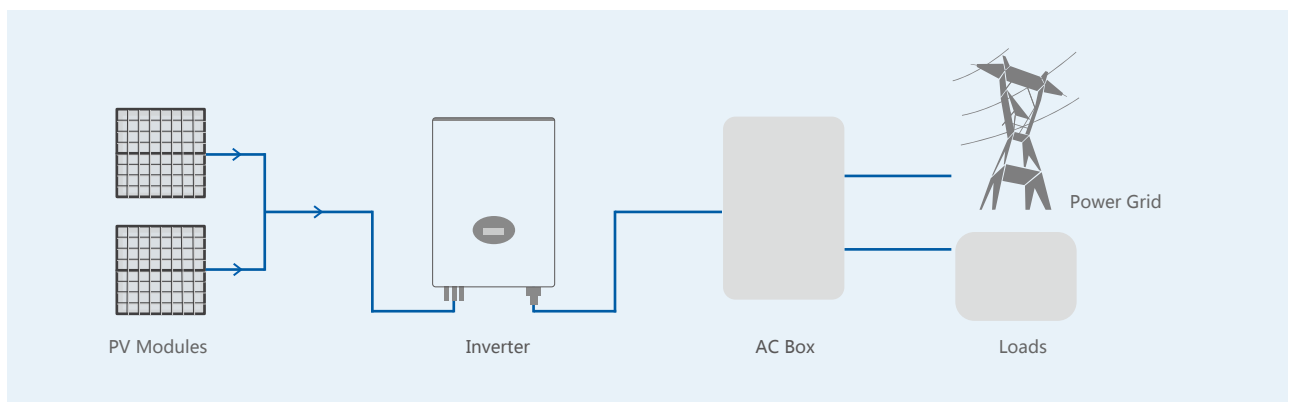
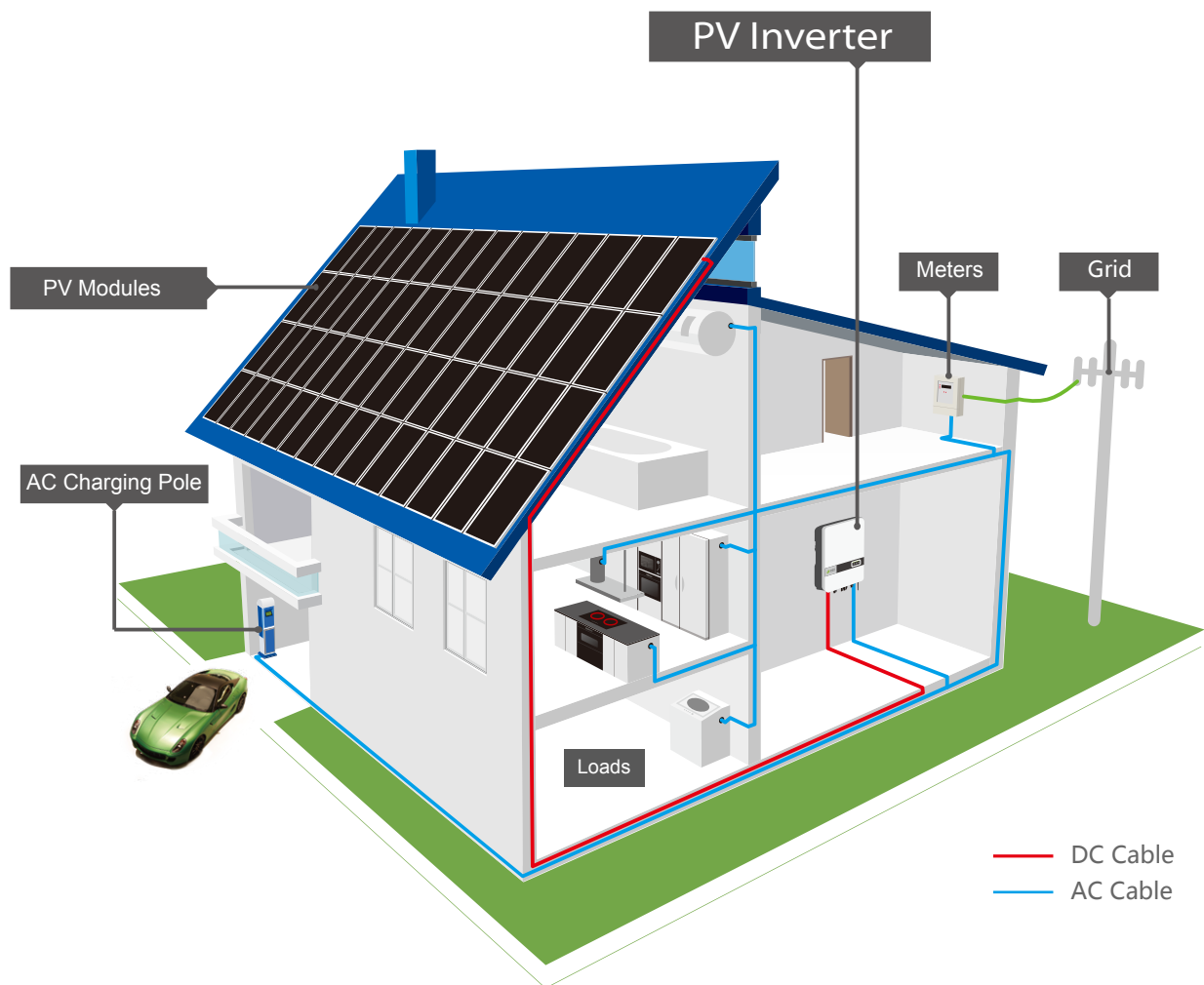
Based on the strong industry chain advantages, cost advantages and PV plants development, design and construction advantage, CHINT provides the world-leading One-stop solution for PV plants.

System application environment

Distributed PV plant is to build PV power plant by utilizing idle roof or open and shadowless ground resources of house, industrial factories to realize “self-sufficiency and surplus electricity feed-in to the power grid”, which has certain energy saving benefits. At the same time, installing components on the roof can increase the thermal insulation performance. In recent years, distributed PV plant has been accepted by more and more users as an economic and environmental protection energy mode.

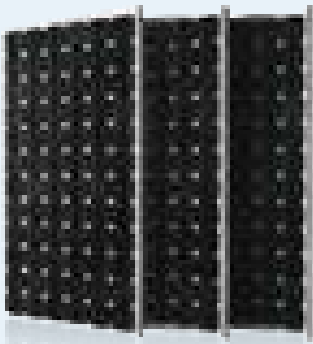


Working Principle



Main equipment

PV modules



Monocrystalline



Polycrystalline



BlackSerie



Monocrystalline

Polycrystalline

BlackSerie

Cells

60-72

60-72

60-72

Output

275Wp-370Wp

255Wp-345Wp

275Wp-370Wp

Module Efficiency

Up to 19.7%

Up to 18.5%

Up to 19.7%

Size

1648x990x35mm
1954x990x40mm

1648x990x35mm
1954x990x40mm

1648x990x35mm
1954x990x40mm

On-grid Inverter

Single phase PV Inverter



1~1.5kW



2~3.6kW



3~5kW



6kW

Three phase PV Inverter



4/5/6/8/10kW



20/25kW



30/36kW



50/60kW



70kW

Centralized Inverter



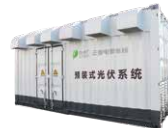
500kW/630kW
/1MW



1.25MW/
1.5MW(1500V)



1MW/1.26MW/2MW/2.5MW/3MW



Inverter For NA



3/45/6kW/US



14kW
/US-208



20kW
/US-480



23/28/36kW
/US-480



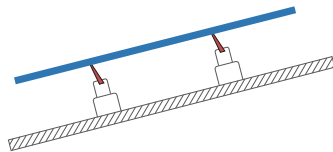
50kW
/US-480



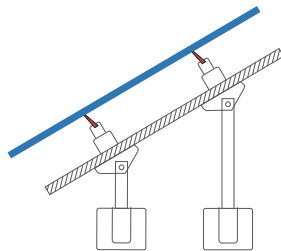
60kW
/US-480

Mounting system

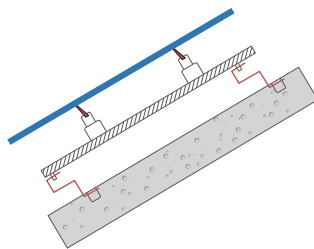
Metal Sheet Roof



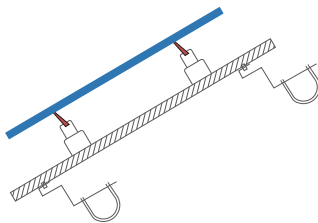
Concrete Flat Roof



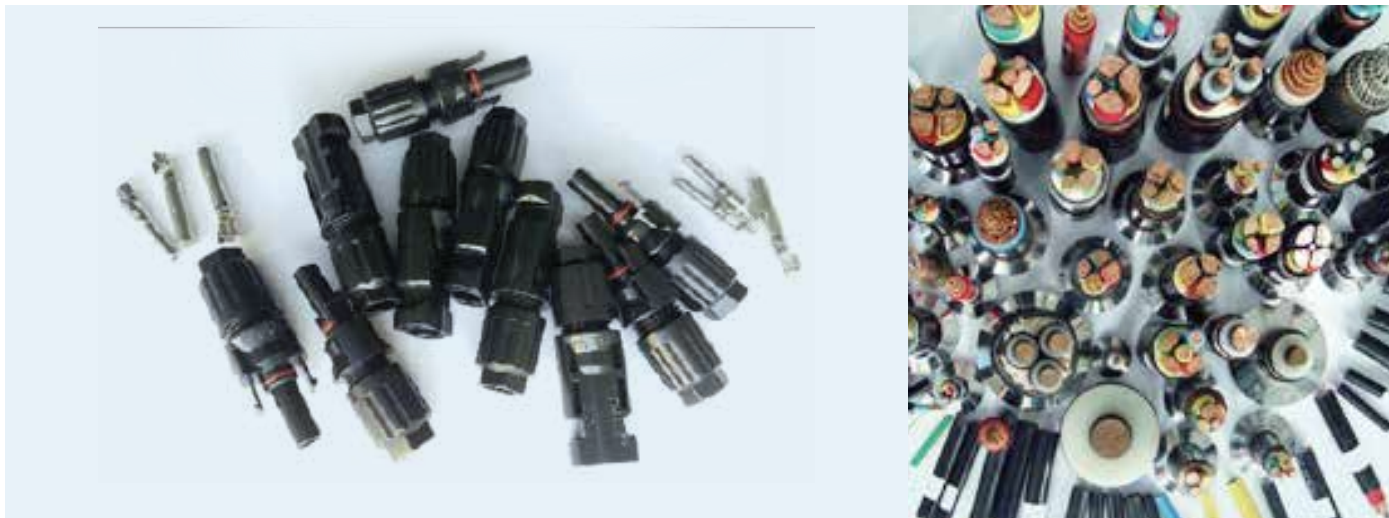
Tile Roof-Hook



Wooden beam roof-Hoop



Cables and accessories



AC box



System Solution

1. 330Wp / 340Wp polycrystalline silicon PV Modules

(1) PV system: From 1kW to 5KW

Equipment List of Distribution PV System							
System Parameter							
Capacity (kW)		1kW	2kW	2.5kW	3kW	3.6kW	5kW
PV Module(W)	CHSM6612P-330W,Poly	330	330	330	330	330	330
Qty of Modules		4	7	8	10	13	16
Actual Power (kW)		1.32	2.31	2.64	3.3	4.29	5.28
Main Equipment							
Mounting System (Tile roof/Flat roof/Metal sheet roof/Ground)	Unit: set	1	1	1	1	1	1
On-grid Inverter	Model Name	CPS SCA1KTL-S	CPS SCA2KTL-S	CPS SCA2.5KTL-S	CPS SCA3KTL-S	CPS SCA3.6KTL-S	CPS SCA5KTL-SM
	Rated AC Power(KW)	1kW	2kW	2.5kW	3kW	3.6kW	5kW
	Max.Number of DC Input	1	1	1	1	1	2
	Rated AC Voltage/Range	180-280V	180-280V	180-280V	180-280V	180-280V	180-280V
	Rated Frequency	50Hz/60Hz	50Hz/60Hz	50Hz/60Hz	50Hz/60Hz	50Hz/60Hz	50Hz/60Hz
AC Box(with meter)	Disconnecter	10A	16A	16A	20A	25A	25A
	Surge Protector	20kA	20kA	20kA	20kA	20kA	20kA
Cable							
DC Cable	PV1-F-1*4mm2(m)-Estimated	20	30	30	40	40	60
MC4 Connector	Female and Male	3	3	3	4	4	6
AC Cable	Mode	ZR-YJV 0.6/1KV - 3*4mm2	ZR-YJV 0.6/1KV - 3*4mm2	ZR-YJV 0.6/1KV - 3*4mm2	ZR-YJV 0.6/1KV - 3*4mm2	ZR-YJV 0.6/1KV - 3*4mm2	ZR-YJV 0.6/1KV - 3*4mm2
	Length (m)-Estimated	40	40	40	40	40	40
Note: The cable length refers to the flat layout of the tilted roof . Suppose the building elevation is 15 meters and the photovoltaic power station is about 30 meters away from the grid-connected point.							

Equipment List of Distribution PV System							
System Parameter							
Capacity (kW)		1kW	2kW	2.5kW	3kW	3.6kW	5kW
PV Module(W)	CHSM6612P-340W,Poly	340	340	340	340	340	340
Qty of Modules		3	7	8	10	12	16
Actual Power (kW)		1.02	2.38	2.72	3.4	4.08	5.44
Main Equipment							
Mounting System (Tile roof/Flat roof/ Metal sheet roof/ Ground)	Unit: set	1	1	1	1	1	1
On-grid Inverter	Model Name	CPS SCA1KTL-S	CPS SCA2KTL-S	CPS SCA2.5KTL-S	CPS SCA3KTL-S	CPS SCA3.6KTL-S	CPS SCA5KTL-SM
	Rated AC Power(KW)	1kW	2kW	2.5kW	3kW	3.6kW	5kW
	Max.Number of DC Input	1	1	1	1	1	2
	Rated AC Voltage/Range	180-280V	180-280V	180-280V	180-280V	180-280V	180-280V
	Rated Frequency	50Hz/60Hz	50Hz/60Hz	50Hz/60Hz	50Hz/60Hz	50Hz/60Hz	50Hz/60Hz
AC Box(with meter)	Disconnecter	10A	16A	16A	20A	25A	25A
	Surge Protector	20kA	20kA	20kA	20kA	20kA	20kA
Cable							
DC Cable	PV1-F-1*4mm2(m)-Estimated	20	30	30	40	40	60
MC4 Connector	Female and Male	3	3	3	4	4	6
AC Cable	Mode	ZR-YJV 0.6/1KV - 3*4mm2	ZR-YJV 0.6/1KV - 3*4mm2	ZR-YJV 0.6/1KV - 3*4mm2	ZR-YJV 0.6/1KV - 3*4mm2	ZR-YJV 0.6/1KV - 3*4mm2	ZR-YJV 0.6/1KV - 3*4mm2
	Length (m)-Estimated	40	40	40	40	40	40
Note: The cable length refers to the flat layout of the tilted roof . Suppose the building elevation is 15 meters and the photovoltaic power station is about 30 meters away from the grid-connected point.							

(2) PV system: From 6kW to 15KW

Equipment List of Distribution PV System							
System Parameter							
Capacity (kW)		6kW	7kW	8kW	10kW	12kW	15kW
PV Module(W)	CHSM6612P-330W,Poly	330	330	330	330	330	330
Qty of Modules		20	22	26	32	40	52
Actual Power (kW)		6.6	7.26	8.58	10.56	13.2	17.16
Main Equipment							
Mounting System (Tile roof/ Flat roof/Metal sheet roof/Ground)	Unit: set	1	1	1	1	1	1
On-grid Inverter	Model Name	CPS SCA6KTL-SM	1*CPS SCA3KTL-S 1*CPS SCA3.6KTL-S	2*CPS SCA3.6KTL-S	CPS SCA10KTL	CPS SCA12KTL	CPS SCA15KTL
	Rated AC Power(KW)	6kW	3kW+3.6kW	3.6kW+3.6kW	10kW	12kW	15kW
	Max.Number of DC Input	2	1+1	1+1	2	4	4
	Rated AC Voltage/Range	180-280V	180-280V	180-280V	277-520V	277-520V	277-520V
AC Box(with meter)	Rated Frequency	50Hz/60Hz	50Hz/60Hz	50Hz/60Hz	50Hz/60Hz	50Hz/60Hz	50Hz/60Hz
	Disconnecter	32A	25A+25A	25A+25A	25A	25A	32A
	Surge Protector	20kA	20kA	20kA	20kA	20kA	20kA
Cable							
DC Cable	PV1-F-1*4mm2(m)-Estimated	80	80	80	80	100	160
MC4 Connector	Female and Male	6	6	6	6	6	10
AC Cable	Mode	ZR-YJV 0.6/1kV-3*4mm2	ZR-YJV 0.6/1kV-3*6 mm2	ZR-YJV 0.6/1kV-3*6mm2	ZR-YJV 0.6/1kV-3*6+2*2.5mm2	ZR-YJV 0.6/1kV-3*6+2*2.5mm2	ZR-YJV 0.6/1kV-3*6+2*2.5mm2
	Length (m)-Estimated	40	80	80	40	40	40
Note: The cable length refers to the flat layout of the tilted roof . Suppose the building elevation is 15 meters and the photovoltaic power station is about 30 meters away from the grid-connected point.							

Equipment List of Distribution PV System							
System Parameter							
Capacity (kW)		6kW	7kW	8kW	10kW	12kW	15kW
PV Module(W)	CHSM6612P-340W,Poly	340	340	340	340	340	340
Qty of Modules		20	22	24	32	40	52
Actual Power (kW)		6.8	7.48	8.16	10.88	13.6	17.68
Main Equipment							
Mounting System (Tile roof/Flat roof/ Metal sheet roof/ Ground)	Unit: set	1	1	1	1	1	1
On-grid Inverter	Model Name	CPS SCA6KTL-SM	1*CPS SCA3KTL-S 1*CPS SCA3.6KTL-S	2*CPS SCA3.6KTL-S	CPS SCA10KTL	CPS SCA12KTL	CPS SCA15KTL
	Rated AC Power(KW)	6kW	3kW+3.6kW	3.6kW+3.6kW	10kW	12kW	15kW
	Max.Number of DC Input	2	1+1	1+1	2	4	4
	Rated AC Voltage/Range	180-280V	180-280V	180-280V	277-520V	277-520V	277-520V
AC Box(with meter)	Rated Frequency	50Hz/60Hz	50Hz/60Hz	50Hz/60Hz	50Hz/60Hz	50Hz/60Hz	50Hz/60Hz
	Disconnecter	32A	25A+25A	25A+25A	25A	25A	32A
	Surge Protector	20kA	20kA	20kA	20kA	20kA	20kA
Cable							
DC Cable	PV1-F-1*4mm2(m)-Estimated	80	80	80	80	100	160
MC4 Connector	Female and Male	6	6	6	6	6	10
AC Cable	Mode	ZR-YJV 0.6/1kV-3*4mm2	ZR-YJV 0.6/1kV-3*6 mm2	ZR-YJV 0.6/1kV-3*6 mm2	ZR-YJV 0.6/1kV-3*6+2*2.5mm2	ZR-YJV 0.6/1kV-3*6+2*2.5mm2	ZR-YJV 0.6/1kV-3*6+2*2.5mm2
	Length (m)-Estimated	40	80	80	40	40	40
Note: The cable length refers to the flat layout of the tilted roof . Suppose the building elevation is 15 meters and the photovoltaic power station is about 30 meters away from the grid-connected point.							

(3) PV system: From 17kW to 60KW

Equipment List of Distribution PV System							
System Parameter							
Capacity (kW)		17kW	20kW	22kW	30kW	50kW	60kW
PV Module(W)	CHSM6612P-330W,Poly	330	330	330	330	330	330
Qty of Modules		60	68	72	102	180	216
Actual Power (kW)		19.8	22.44	23.76	33.66	59.4	71.28
Main Equipment							
Mounting System (Tile roof/Flat roof/Metal sheet roof/Ground)	Unit: set	1	1	1	1	1	1
On-grid Inverter	Model Name	CPS SCA17KTL	CPS SCA20KTL	CPS SCA22KTL	CPS SCA30KTL	CPS SCA50KTL-DO/400/480	CPS SCA60KTL-DO/480
	Rated AC Power(KW)	17kW	20kW	22kW	30kW	50kW	60kW
	Max.Number of DC Input	4	4	4	6	9	12
	Rated AC Voltage/Range	277-520V	277-520V	277-520V	277-520V	320-460V/422-528V	422-528V
	Rated Frequency	50Hz/60Hz	50Hz/60Hz	50Hz/60Hz	50Hz/60Hz	50Hz/60Hz	50Hz/60Hz
AC Box(with meter)	Disconnecter	40A	50A	50A	63A	100A	100A
	Surge Protector	20kA	20kA	20kA	20kA	20kA	20kA
Cable							
DC Cable	PV1-F-1*4mm2(m)-Estimated	160	180	180	300	550	600
MC4 Connector	Female and Male	10	10	10	14	22	30
AC Cable	Mode	ZR-YJV 0.6/1KV -3*6+2*2.5mm2	ZR-YJV 0.6/1KV-3*10+2*4mm2	ZR-YJV 0.6/1KV -3*10+2*4mm2	ZR-YJV 0.6/1KV -3*16+2*10mm2	ZR-YJV 0.6/1KV -3*35+1*16mm2	ZR-YJV 0.6/1KV -3*35+1*16mm2
	Length (m)-Estimated	40	40	40	40	40	40
Note: The cable length refers to the flat layout of the tilted roof . Suppose the building elevation is 15 meters and the photovoltaic power station is about 30 meters away from the grid-connected point.							

Equipment List of Distribution PV System							
System Parameter							
Capacity (kW)		17kW	20kW	22kW	30kW	50kW	60kW
PV Module(W)	CHSM6612P-340W,Poly	340	340	340	340	340	340
Qty of Modules		60	64	72	96	162	180
Actual Power (kW)		20.4	21.76	24.48	32.64	55.08	61.2
Main Equipment							
Mounting System (Tile roof/Flat roof/ Metal sheet roof/ Ground)	Unit: set	1	1	1	1	1	1
On-grid Inverter	Model Name	CPS SCA17KTL	CPS SCA20KTL	CPS SCA22KTL	CPS SCA30KTL	CPS SCA50KTL-DO/400/480	CPS SCA60KTL-DO/480
	Rated AC Power(KW)	17kW	20kW	22kW	30kW	50kW	60kW
	Max.Number of DC Input	4	4	4	6	9	12
	Rated AC Voltage/Range	277-520V	277-520V	277-520V	277-520V	320-460V/422-528V	422-528V
	Rated Frequency	50Hz/60Hz	50Hz/60Hz	50Hz/60Hz	50Hz/60Hz	50Hz/60Hz	50Hz/60Hz
AC Box(with meter)	Disconnecter	40A	50A	50A	63A	100A	100A
	Surge Protector	20kA	20kA	20kA	20kA	20kA	20kA
Cable							
DC Cable	PV1-F-1*4mm2(m)-Estimated	160	180	180	240	450	500
MC4 Connector	Female and Male	10	10	10	14	22	30
AC Cable	Mode	ZR-YJV 0.6/1KV -3*6+2*2.5mm2	ZR-YJV 0.6/1KV-3*10+2*4mm2	ZR-YJV 0.6/1KV-3*10+2*4mm2	ZR-YJV 0.6/1KV -3*16+2*10mm2	ZR-YJV 0.6/1KV -3*35+1*16mm2	ZR-YJV 0.6/1KV -3*35+1*16mm2
	Length (m)-Estimated	40	40	40	40	40	40
Note: The cable length refers to the flat layout of the tilted roof . Suppose the building elevation is 15 meters and the photovoltaic power station is about 30 meters away from the grid-connected point.							

2.355Wp/365Wp Monocrystalline silicon PV Modules

(1) PV system: From 1kW to 5KW

Equipment List of Distribution PV System							
System Parameter							
Capacity (kW)		1kW	2kW	2.5kW	3kW	3.6kW	5kW
PV Module(W)	CHSM6612M-355W, Mono	355	355	355	355	355	355
Qty of Modules		3	6	8	10	12	16
Actual Power (kW)		1.065	2.13	2.84	3.55	4.26	5.68
Main Equipment							
Mounting System (Tile roof/Flat roof/ Metal sheet roof/ Ground)	Unit: set	1	1	1	1	1	1
On-grid Inverter	Model Name	CPS SCA1KTL-S	CPS SCA2KTL-S	CPS SCA2.5KTL-S	CPS SCA3KTL-S	CPS SCA3.6KTL-S	CPS SCA5KTL-SM
	Rated AC Power(KW)	1kW	2kW	2.5kW	3kW	3.6kW	5kW
	Max.Number of DC Input	1	1	1	1	1	2
	Rated AC Voltage/Range	180-280V	180-280V	180-280V	180-280V	180-280V	180-280V
	Rated Frequency	50Hz/60Hz	50Hz/60Hz	50Hz/60Hz	50Hz/60Hz	50Hz/60Hz	50Hz/60Hz
AC Box(with meter)	Disconnecter	10A	16A	16A	20A	25A	32A
	Surge Protector	20kA	20kA	20kA	20kA	20kA	20kA
Cable							
DC Cable	PV1-F-1*4mm2(m)- Estimated	20	30	30	40	40	60
MC4 Connector	Female and Male	3	3	3	4	4	6
AC Cable	Mode	ZR-YJV 0.6/1KV - 3*4mm2	ZR-YJV 0.6/1KV - 3*4mm2	ZR-YJV 0.6/1KV - 3*4mm2	ZR-YJV 0.6/1KV - 3*4mm2	ZR-YJV 0.6/1KV - 3*4mm2	ZR-YJV 0.6/1KV - 3*4mm2
	Length (m)- Estimated	40	40	40	40	40	40
Note: The cable length refers to the flat layout of the tilted roof . Suppose the building elevation is 15 meters and the photovoltaic power station is about 30 meters away from the grid-connected point.							

Equipment List of Distribution PV System							
System Parameter							
Capacity (kW)		1kW	2kW	2.5kW	3kW	3.6kW	5kW
PV Module(W)	CHSM6612M-365W, Mono	365	365	365	365	365	365
Qty of Modules		3	6	8	10	12	16
Actual Power (kW)		1.095	2.19	2.92	3.65	4.38	5.84
Main Equipment							
Mounting System (Tile roof/Flat roof/ Metal sheet roof/ Ground)	Unit: set	1	1	1	1	1	1
On-grid Inverter	Model Name	CPS SCA1KTL-S	CPS SCA2KTL-S	CPS SCA2.5KTL-S	CPS SCA3KTL-S	CPS SCA3.6KTL-S	CPS SCA5KTL-SM
	Rated AC Power(KW)	1kW	2kW	2.5kW	3kW	3.6kW	5kW
	Max.Number of DC Input	1	1	1	1	1	2
	Rated AC Voltage/Range	180-280V	180-280V	180-280V	180-280V	180-280V	180-280V
	Rated Frequency	50Hz/60Hz	50Hz/60Hz	50Hz/60Hz	50Hz/60Hz	50Hz/60Hz	50Hz/60Hz
AC Box(with meter)	Disconnecter	10A	16A	16A	20A	25A	32A
	Surge Protector	20kA	20kA	20kA	20kA	20kA	20kA
Cable							
DC Cable	PV1-F-1*4mm2(m)- Estimated	20	30	30	40	40	60
MC4 Connector	Female and Male	3	3	3	4	4	6
AC Cable	Mode	ZR-YJV 0.6/1KV - 3*4mm2	ZR-YJV 0.6/1KV - 3*4mm2	ZR-YJV 0.6/1KV - 3*4mm2	ZR-YJV 0.6/1KV - 3*4mm2	ZR-YJV 0.6/1KV - 3*4mm2	ZR-YJV 0.6/1KV - 3*4mm2
	Length (m)- Estimated	40	40	40	40	40	40
Note: The cable length refers to the flat layout of the tilted roof . Suppose the building elevation is 15 meters and the photovoltaic power station is about 30 meters away from the grid-connected point.							

(2) PV system: From 6kW to 15KW

Equipment List of Distribution PV System							
System Parameter							
Capacity (kW)		6kW	7kW	8kW	10kW	12kW	15kW
PV Module(W)	CHSM6612M-355W, Mono	355	355	355	355	355	355
Qty of Modules		20	22	26	32	40	48
Actual Power (kW)		7.1	7.81	9.23	11.36	14.2	17.04
Main Equipment							
Mounting System (Tile roof/Flat roof/ Metal sheet roof/ Ground)	Unit: set	1	1	1	1	1	1
On-grid Inverter	Model Name	CPS SCA6KTL-SM	1*CPS SCA3KTL-S 1*CPS SCA3.6KTL-S	2*CPS SCA3.6KTL-S	CPS SCA10KTL	CPS SCA12KTL	CPS SCA15KTL
	Rated AC Power(KW)	6kW	3kW+3.6kW	3.6kW+3.6kW	10kW	12kW	15kW
	Max.Number of DC Input	2	1+1	1+1	2	4	4
	Rated AC Voltage/Range	180-280V	180-280V	180-280V	277-520V	277-520V	277-520V
	Rated Frequency	50Hz/60Hz	50Hz/60Hz	50Hz/60Hz	50Hz/60Hz	50Hz/60Hz	50Hz/60Hz
AC Box(with meter)	Disconnecter	32A	25A+25A	25A+25A	25A	32A	40A
	Surge Protector	20kA	20kA	20kA	20kA	20kA	20kA
Cable							
DC Cable	PV1-F-1*4mm2(m)- Estimated	80	80	80	80	100	160
MC4 Connector	Female and Male	6	6	6	6	6	10
AC Cable	Mode	ZR-YJV 0.6/1KV- 3*4mm2	ZR-YJV 0.6/1KV- 3*6 mm2	ZR-YJV 0.6/1KV- 3*6 mm2	ZR-YJV 0.6/1KV - 3*6+2*2.5mm2	ZR-YJV 0.6/1KV - 3*6+2*2.5mm2	ZR-YJV 0.6/1KV - 3*6+2*2.5mm2
	Length (m)- Estimated	40	80	80	40	40	40
Note: The cable length refers to the flat layout of the tilted roof . Suppose the building elevation is 15 meters and the photovoltaic power station is about 30 meters away from the grid-connected point.							

Equipment List of Distribution PV System							
System Parameter							
Capacity (kW)		6kW	7kW	8kW	10kW	12kW	15kW
PV Module(W)	CHSM6612M-365W, Mono	365	365	365	365	365	365
Qty of Modules		18	22	24	32	36	48
Actual Power (kW)		6.57	8.03	8.76	11.68	13.14	17.52
Main Equipment							
Mounting System (Tile roof/Flat roof/ Metal sheet roof/ Ground)	Unit: set	1	1	1	1	1	1
On-grid Inverter	Model Name	CPS SCA6KTL-SM	1*CPS SCA3KTL-S 1*CPS SCA3.6KTL-S	2*CPS SCA3.6KTL-S	CPS SCA10KTL	CPS SCA12KTL	CPS SCA15KTL
	Rated AC Power(KW)	6kW	3kW+3.6kW	3.6kW+3.6kW	10kW	12kW	15kW
	Max.Number of DC Input	2	1+1	1+1	2	4	4
	Rated AC Voltage/Range	180-280V	180-280V	180-280V	277-520V	277-520V	277-520V
	Rated Frequency	50Hz/60Hz	50Hz/60Hz	50Hz/60Hz	50Hz/60Hz	50Hz/60Hz	50Hz/60Hz
AC Box(with meter)	Disconnecter	32A	25A+25A	25A+25A	25A	32A	40A
	Surge Protector	20kA	20kA	20kA	20kA	20kA	20kA
Cable							
DC Cable	PV1-F-1*4mm2(m)- Estimated	80	80	80	80	100	160
MC4 Connector	Female and Male	6	6	6	6	6	10
AC Cable	Mode	ZR-YJV 0.6/1KV- 3*4mm2	ZR-YJV 0.6/1KV- 3*6 mm2	ZR-YJV 0.6/1KV- 3*6 mm2	ZR-YJV 0.6/1KV - 3*6+2*2.5mm2	ZR-YJV 0.6/1KV - 3*6+2*2.5mm2	ZR-YJV 0.6/1KV - 3*6+2*2.5mm2
	Length (m)- Estimated	40	80	80	40	40	40
Note: The cable length refers to the flat layout of the tilted roof . Suppose the building elevation is 15 meters and the photovoltaic power station is about 30 meters away from the grid-connected point.							

(3) PV system: from 17kW to 60KW

Equipment List of Distribution PV System							
System Parameter							
Capacity (kW)		17kW	20kW	22kW	30kW	50kW	60kW
PV Module(W)	CHSM6612M-355W, Mono	355	355	355	355	355	355
Qty of Modules		52	64	72	96	162	192
Actual Power (kW)		18.46	22.72	25.56	34.08	57.51	68.16
Main Equipment							
Mounting System (Tile roof/Flat roof/ Metal sheet roof/ Ground)	Unit: set	1	1	1	1	1	1
On-grid Inverter	Model Name	CPS SCA17KTL	CPS SCA20KTL	2*CPS SCA22KTL	CPS SCA30KTL	CPS SCA50KTL DO/400/480	CPS SCA60KTL DO/480
	Rated AC Power(KW)	17kW	20kW	22kW	30kW	50kW	60kW
	Max.Number of DC Input	4	4	4	6	9	12
	Rated AC Voltage/Range	277-520V	277-520V	277-520V	277-520V	320-460V/422-528V	422-528V
AC Box(with meter)	Rated Frequency	50Hz/60Hz	50Hz/60Hz	50Hz/60Hz	50Hz/60Hz	50Hz/60Hz	50Hz/60Hz
	Disconnecter	40A	50A	50A	63A	100A	100A
	Surge Protector	20kA	20kA	20kA	20kA	20kA	20kA
Cable							
DC Cable	PV1-F-1*4mm2(m)- Estimated	160	180	180	250	450	550
MC4 Connector	Female and Male	10	10	10	14	22	30
AC Cable	Mode	ZR-YJV 0.6/1KV - 3*6+2*2.5mm2	ZR-YJV 0.6/1KV- 3*10+2*4mm2	ZR-YJV 0.6/1KV - 3*10+2*4mm2	ZR-YJV 0.6/1KV - 3*16+2*10mm2	ZR-YJV 0.6/1KV - 3*35+1*16mm2	ZR-YJV 0.6/1KV - 3*35+1*16mm2
	Length (m)- Estimated	40	40	40	40	40	40
Note: The cable length refers to the flat layout of the tilted roof . Suppose the building elevation is 15 meters and the photovoltaic power station is about 30 meters away from the grid-connected point.							

Equipment List of Distribution PV System							
System Parameter							
Capacity (kW)		17kW	20kW	22kW	30kW	50kW	60kW
PV Module(W)	CHSM6612M-365W, Mono	365	365	365	365	365	365
Qty of Modules		52	60	64	90	144	180
Actual Power (kW)		18.98	21.9	23.36	32.85	52.56	65.7
Main Equipment							
Mounting System (Tile roof/Flat roof/ Metal sheet roof/ Ground)	Unit: set	1	1	1	1	1	1
On-grid Inverter	Model Name	CPS SCA17KTL	CPS SCA20KTL	2*CPS SCA22KTL-S	CPS SCA30KTL	CPS SCA50KTL- DO/400/480	CPS SCA60KTL- DO/480
	Rated AC Power(KW)	17kW	20kW	22kW	30kW	50kW	60kW
	Max.Number of DC Input	4	4	4	6	9	12
	Rated AC Voltage/Range	277-520V	277-520V	277-520V	277-520V	320-460V/422-528V	422-528V
AC Box(with meter)	Rated Frequency	50Hz/60Hz	50Hz/60Hz	50Hz/60Hz	50Hz/60Hz	50Hz/60Hz	50Hz/60Hz
	Disconnecter	40A	50A	50A	63A	100A	100A
	Surge Protector	20kA	20kA	40kA	40kA	40kA	40kA
Cable							
DC Cable	PV1-F-1*4mm2(m)- Estimated	160	180	180	220	420	550
MC4 Connector	Female and Male	10	10	10	14	22	30
AC Cable	Mode	ZR-YJV 0.6/1KV - 3*6+2*2.5mm2	ZR-YJV 0.6/1KV- 3*10+2*4mm2	ZR-YJV 0.6/1KV - 3*10+2*4mm2	ZR-YJV 0.6/1KV - 3*16+2*10mm2	ZR-YJV 0.6/1KV - 3*35+1*16mm2	ZR-YJV 0.6/1KV - 3*35+1*16mm2
	Length (m)- Estimated	40	40	40	40	40	40
Note: The cable length refers to the flat layout of the tilted roof . Suppose the building elevation is 15 meters and the photovoltaic power station is about 30 meters away from the grid-connected point.							

Project reference



France Grosdenier 243 KW Rooftop Project



Singapore 10KW Project



Japan Kumenan 100KW Project



Ghana 10KW PV System



Brazil Natal Project



Thailand Saraburi Project



Brazil Roof PV Project

Europe

Italy

CHINT Electrics Europe S.R.L.

Add: Via A. Pacinotti 28, 30033 Noale (VE)
Tel: 0039 335 6265 032
E-mail: chint_eu@chint.com

Czech Republic

NOARK Electric Europe s.r.o.

Add: Sezemická 2757/2, 193 00 Prague
Tel: +420 226 203 120
Email: Europe@noark-electric.com
www.noark-electric.eu

Turkey

CHINT TURCA ELEKTRİK SANAYİ VE TİCARET ANONİM ŞİRKETİ

Add: ZÜMRÜTEVLER MAHALLESİ URAL SOKAK NO:22 NAS PLAZA
B BLOK KAT 1 MALTEPE / İSTANBUL
Tel: 0216 621 00 55
Fax: 0216 621 00 50
Email: xiaol@chint.com
www.chint.com.tr

North America

United States

NOARK Electric (USA) Inc.

Add: 2188 Pomona Blvd., Pomona, CA 91767
Tel: 626-330-7007
Fax: 626-330-8035
E-mail: nasales@noark-electric.com
na.noark-electric.com

West Asia & Africa

U.A.E

CHINT West Asia & Africa FZE

Add: Office NO. LB182406, P.O.Box:263174, Jebel Ali, Dubai,
United Arab Emirates
Tel: 00971-48848286
Fax: 00971-48848287
E-mail: chintwaa@chint.com**CHINT**

CHINT Group Corporation

Add: No. 1, CHINT Road, CHINT Industrial Zone, North Baixiang,
Yueqing, Zhejiang, 325603, P.R.China
Tel: +86-577-61986198
Fax: +86-577-62775769 62871811
E-mail: global-sales@chint.com
Website: http://en.chint.com/

Spain

CHINT Electrics S.L.

Add: Calle José Echegaray, Num 8.Parque Empresarial Las Rozas
Edificio 3, Planta 1º, Oficina 3.C.P: 28232 Las Rozas (Madrid)
Tel: 0034 91 636 59 98
Fax: 0034 91 645 95 82
E-mail: info@chintelectrics.es

Russia

ООО «Чинт Электрик»

Адрес: РФ, 115088, г. Москва, ул. Угрешская д.2, стр.33, офис 5
Тел: +74956656340
Факс: +74956656340
E-mail: cis@chint.com

Latin America

Brazil

CHINT Electrics South America Ltd

Add: Avenida Paulista nº1765 – 2º Andar - Conjunto 22- Bairro Cerqueira
Cesar-Edificio Scarpa Bela Vista-SP Sao Paulo/SP, CEP 01311 200
Tel: 0055-11-3266-7654
Fax: 0055-11-3142-9601
E-mail: chintlatinamerica@chint.com , xjie@chint.com

Asia Pacific

China

Zhejiang CHINT Electrics Co.,Ltd

Add (Shanghai): Bldg.2, No.3255 Sixian Road, Songjiang 201614 P.R.China
Tel: 0086-21-67777706
Fax: 0086-21-67777777-88225
E-mail: asiapacific@chint.com, lwgen@chint.com